

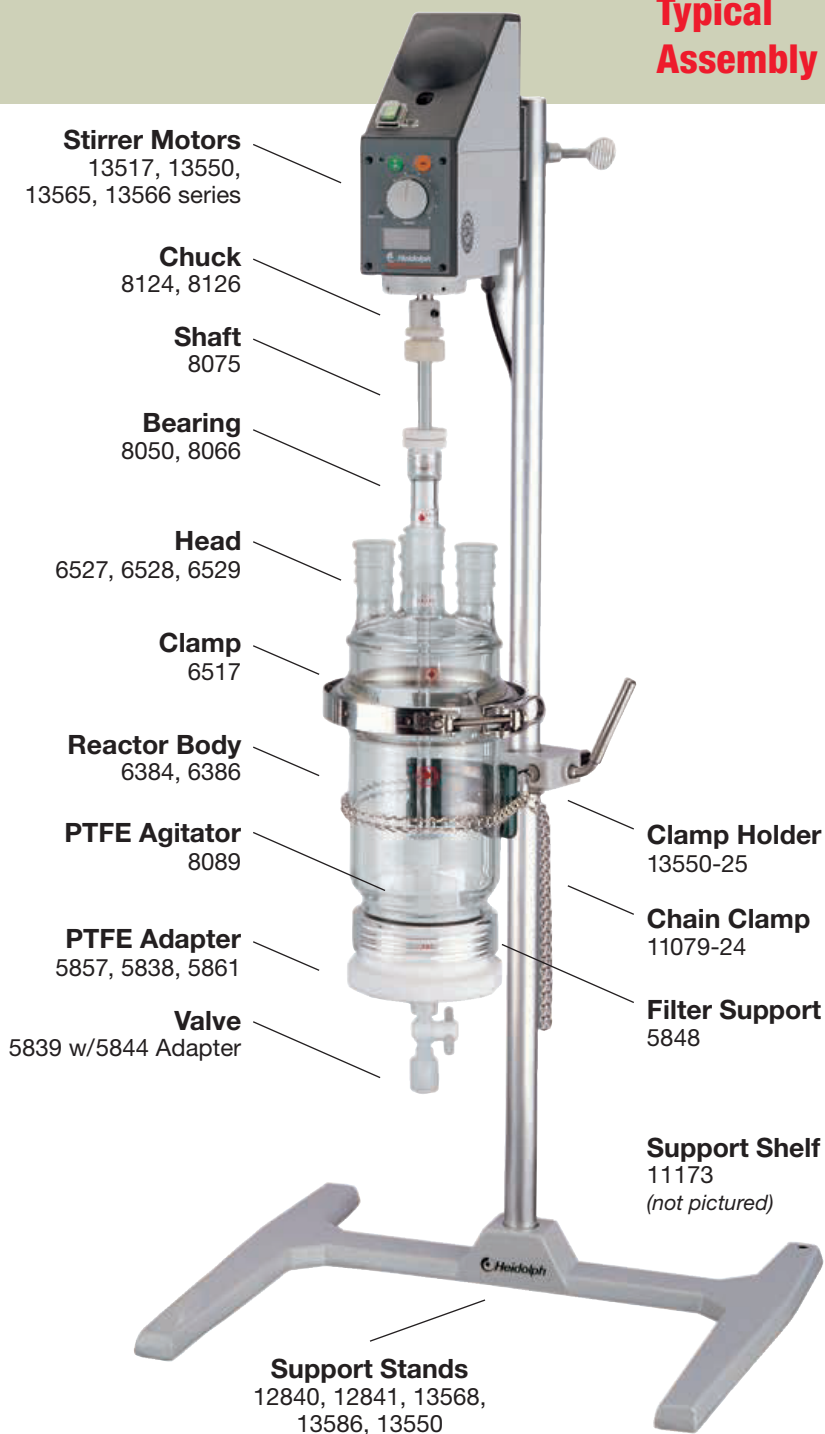
ACE Filter Reactors

allow single or multi-step reactions and filtrations in the same vessel.

Typical Assembly

Major Design Features

- 100 mL to 6000 mL standard
- Unjacketed or Jacketed
- All inert materials
- Reactions at ambient or pressure conditions
- Filtering by vacuum and/or pressure
- Removable/changeable filters, poly screen or glass, wide choice of porosities
- Mechanical agitation
- Inert bottom drain valve
- Easy assembly/disassembly for cleaning

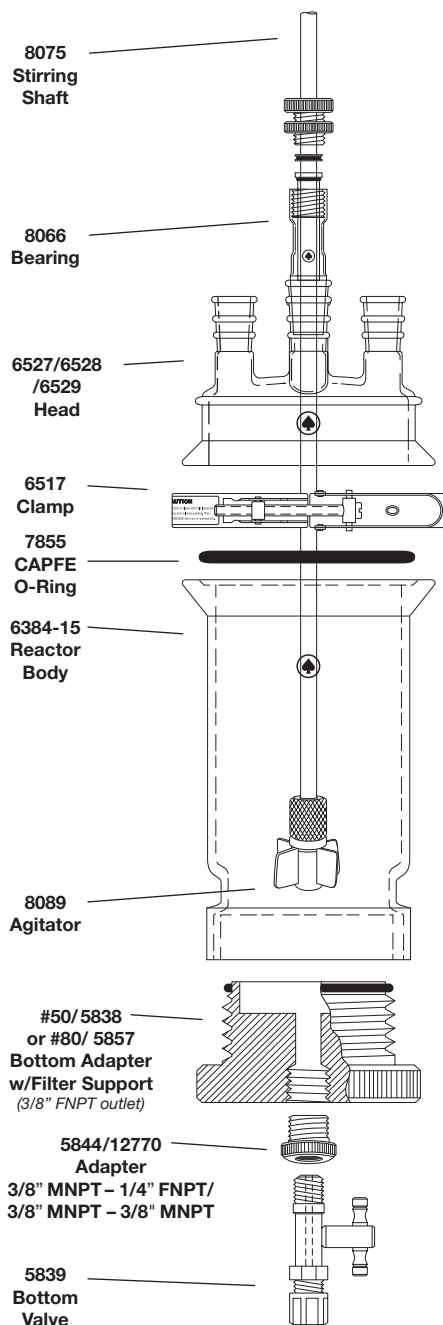


UNJACKETED FILTER REACTOR ★

Rugged, heavy wall reactor with 60mm, 100mm, or 150mm Duran® style top flange with O-Ring groove at top, for connection to 6527, 6528, or 6529 heads, with 6517 quick-release clamp. Bottom has an Ace-Thred (internal glass thread) for installing 5838-83 (#50) or 5857-86 (#80) bottom adapter with filter support and drain valve. Head has three $\frac{3}{8}$ " 24/40 joints on 60mm size; four $\frac{3}{8}$ " 24/40 joints on 100mm and 150mm sizes.

Replacement glass fritted support, polyethylene support, or polypropylene screen, see 5848 or 5814. For condenser and funnel, see 6029 and 7298; stoppers with $\frac{3}{8}$ " 24/40 joints, see 8250. For stirring motor, see 13517, 13565 or 13566 motor; for chuck, see 8124 or 8126. Use 7855-829 CAPFE O-Ring for #50 adapter, 7855-864 for #80 bottom adapter.

Note: Complete item consists of: reactor body with CAPFE O-Ring, head with $\frac{3}{8}$ " joints, 6517 clamp, PTFE bottom adapter with CAPFE O-Ring (with perforated plate—#80 thread only), retainer ring, 350 micron polypropylene screen support and 100 micron polyethylene support, 5844 adapter, 5839 shutoff valve (optional larger valve is available), 8066 bearing, 8075 stirring rod, and 8089 multi-paddle agitator.



Capacity, mL	Flange I.D., mm (in)	Bottom Ace-Thred, #	Body I.D., mm	Approx. Height*, mm	Top CAPFE O-Ring	Order Code
150**	60 (2.4)	50	60	100	7855-878	6384-115
600**	60 (2.4)	50	79	205	7855-878	6384-121
1000	100 (4)	80	100	180	7855-880	6384-125
2000	100 (4)	80	126	210	7855-880	6384-129
3000	150 (6)	80	150	205	7855-881	6384-133
6000	150 (6)	80	150	395	7855-881	6384-137

* Height measurements are measured from top of flask flange to seal on top thread.

** 150mL and 600mL heads have angled side necks.

- Stand (12840, 12841, 13568 or 13586) and Support Shelf (11173) not included.
- 150mL size requires 11079-24 chain clamp rather than a shelf.
- For #80, bottom also available with 1/2" MNPT.



UNJACKETED FILTER REACTOR, PRESSURE VERSION ★

Heavy wall glass reactor available with 60mm, 100mm, or 150mm diameter Duran® style flange with O-Ring groove at top. Connects to 6433 head with a 6517 quick-release clamp. Reactor bottom has an Ace-Thred for installing a 5838-83 (#80) or 5857-86 (#50) adapter with a filter support and bottom drain valve. The 60mm reactor head has a #15 Ace-Thred center neck, (2) #15 and (1) #7 Ace-Thred side necks. The 100mm head has a #15 Ace-Thred center neck, (3) #15, and (1) #7 Ace-Thred side necks. The 150mm head has a #15 Ace-Thred center neck, (4) #15, and (1) #7 Ace-Thred side necks. The Ace-Threds allow for vacuum or pressure applications, and for easy draining of material out of the reactor. The main bearing, funnel and condenser are designed to connect to the threads on the head via compression bushing connections. The #7 Ace-Thred is used for connecting a 1/4" O.D. tubing fitting to allow for a direct connection to a pressure source or a 6448 pressure relief manifold.

Replacement glass fritted discs and supports see 5848 or 5814. See 13511, 13517 or 13566 motor; for chuck, see 8124 or 8126. Use 7855-829 CAPFE O-Ring for #50 adapter, 7855-864 for #80 bottom adapter.

Note: Complete item consists of: reactor body with 60mm CAPFE O-Ring, head with Ace-Threds, 6517 clamp, PTFE bottom threaded adapter and valve with CAPFE O-Ring, retainer ring, 350 micron polypropylene screen support, 100 micron polyethylene support, 5844 adapter, 8044 bearing, 8075 stir rod, 8089 multi-paddle agitator, 6024 condenser, 7299 addition funnel and #7 Ace-Thred bushing. #80 bottom adapter also comes with a perforated glass plate support. Pressure manifold, stand and support clamps are optional.

Capacity, mL	Flange I.D., mm (in)	Bottom Ace-Thred, #	Body I.D., mm	Approx. Height*, mm	Top CAPFE O-Ring	Order Code
150**	60 (2.4)	50	60	100	7855-878	6384-225
600**	60 (2.4)	50	99	205	7855-878	6384-231
1000	100 (4)	80	100	180	7855-880	6384-235
2000	100 (4)	80	126	210	7855-880	6384-239
3000	150 (6)	80	150	205	7855-881	6384-243
6000	150 (6)	80	150	395	7855-881	6384-247

* Height measurements are measured from top of flask flange to seal on top thread.

** 150mL and 600mL heads have angled side necks.

- Stand (12840, 12841, 13568 or 13586) and Support Shelf (11173) not included.
- 150mL size requires 11079-24 chain clamp rather than a shelf.
- For #80, bottom also available with 1/2" MNPT.



Glass Filter Discs



**35psig
@100°C**

